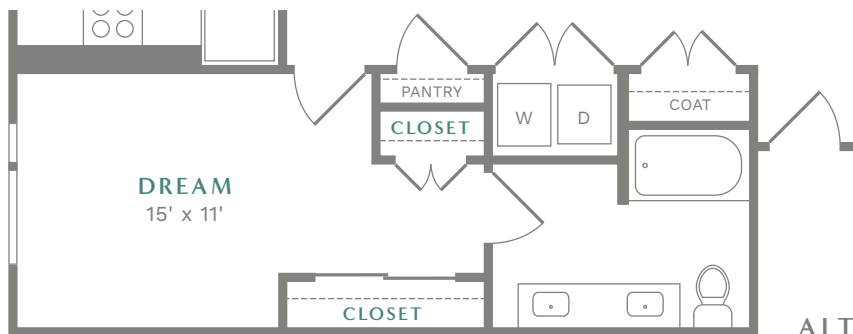
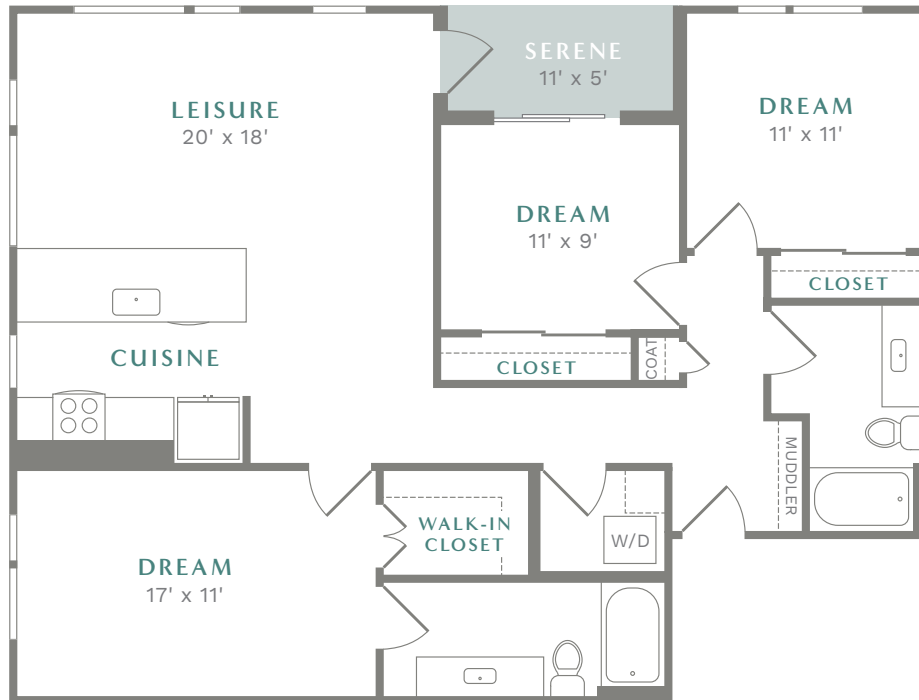


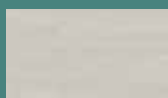


C1 / 3 bedrooms / 2 bathrooms / 1,331 s.f.

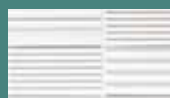


RENT/MO: _____ DEPOSIT: _____

FINISHES



flooring



backsplash



cabinets



countertops

000.000.0000
 leasing@alexanheartwood.com
 1150 10th Ave. NE
 Issaquah, WA 98029

Interior layout varies to accommodate accessible features. Actual apartment materials, colors, and finishes may vary. Not all homes have a balcony or patio and sizes may vary. Interior layout may vary by home. Floor plan is an artist's rendering and may not be to scale. Square footage is approximate and may vary by unit. Availability and pricing subject to change. See an office representative for details.

